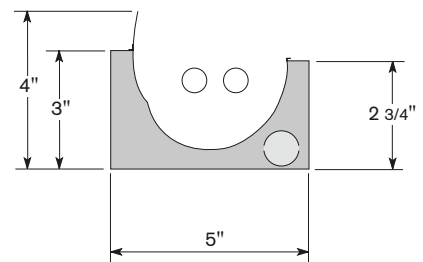
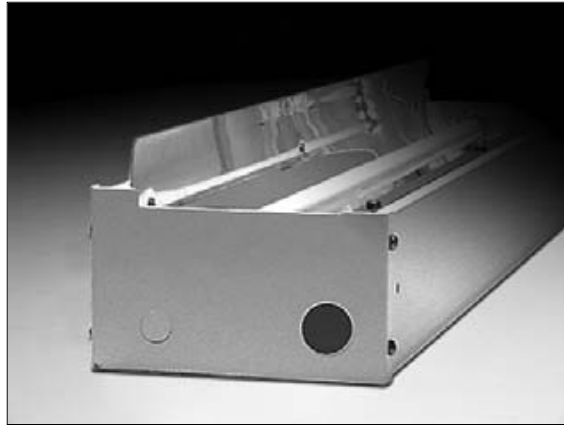


GX T5 HO

Linear Fluorescent

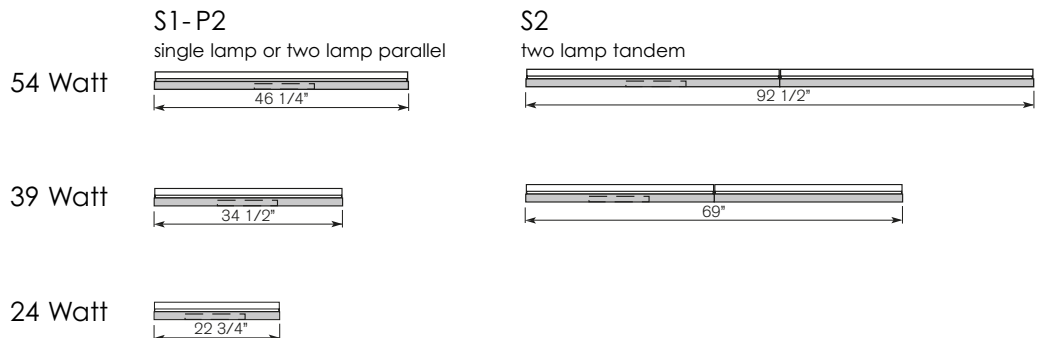


Fixture dimensions are the same for either 1-lamp or 2-lamps

gx | T5 high output performance linear cove system

- Concealed cove lighting system designed for high output performance T5 lamps
- Single or double lamp options
- Wide forward throw distribution with excellent ceiling uniformity
- Die-formed 21 gauge housing with powder coat enamel finish
- High reflectance specular aluminum reflector
- Modules are through-wired for easy installation
- Electronic, High Power Factor ballasts
- UL & CUL listed locations

front view:



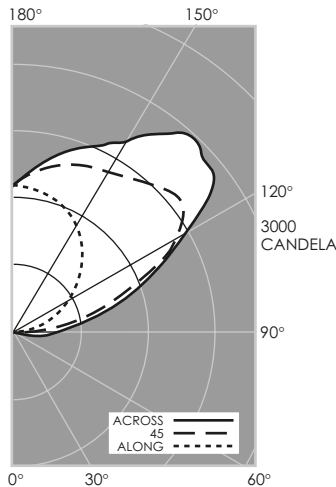
GX.2

how to specify: GX 54 P2 1 D3 46

PRODUCT	LAMP	LAMP CONFIG.	VOLTAGE	BALLAST	LUMINAIRE LENGTH	OPTIONS
GX - T5 High Output	54 - 54 watt T5 HO	P2 - 2 lamps (Parallel)	U - Universal 120 through 277v <i>Please Specify Voltage For Dimming</i> 1 - 120V 2 - 277V	E - Electronic High Power Factor	92 - 54 watt / S2 / 92.5 in.	EM - Emergency Ballast <i>4' nominal lamp only</i> SC - Single Circuit DC - Dual Circuit
	39 - 39 watt T5 HO	S2 - 2 lamps (Tandem)		D1 - Digital Dimming DALI compatible (54 watt only)	46 - 54 watt / S1-P2 / 46.25 in.	
	24 - 24 watt T5 HO	S1 - 1 lamp		D2 - 0 to 10 volt control system (54 watt only) D3 - Lutron Eco-10™ D4 - Lutron Hi-Lume®	69 - 39 watt / S2 / 69 in. 34 - 39 watt / S1-P2 / 34.5 in. 22 - 24 watt / S1-P2 / 22.75 in.	

photometric data | catalog no. GX 54 D2 U E 46

lighting sciences, inc. | report no. 19128



Zone	Lumens	% Lamp	% Fixt
0-30°	0	0.00	0.00
0-60°	0	0.00	0.00
0-90°	91	1.02	1.28
90-180°	7074	78.6	98.72
Total Fixture			
0-180°	7165	79.62	100.00

Efficiency: 79.6%

Angle	Along	22.5°	45°	67.5°	Across	Output Lumens
0°	0	0	0	0	0	0
5°	0	0	0	0	0	0
15°	0	0	0	0	0	0
25°	0	0	0	0	0	0
35°	0	0	0	0	0	0
45°	0	0	0	0	0	0
55°	0	0	0	0	0	0
65°	0	0	0	0	0	0
75°	0	0	0	0	0	5
85°	0	16	134	310	294	87
90°	0	118	304	501	503	
95°	45	304	428	600	598	237
105°	262	930	978	1195	1156	505
115°	543	1334	1732	1858	1784	753
125°	814	1404	2287	2630	2627	890
135°	1064	1543	2269	2803	2895	826
145°	1294	1698	2096	2421	2657	645
155°	1454	1756	2007	2182	2261	452
165°	1554	1742	1889	1970	2036	262
175°	1610	1653	1706	1718	1763	84
180°	1612	1612	1612	1612	1612	

> additional photometry for the one 54 watt T5 lamp configuration can be downloaded at www.electrix.com

GX T5 HO linear fluorescent

GX.3

electrix

