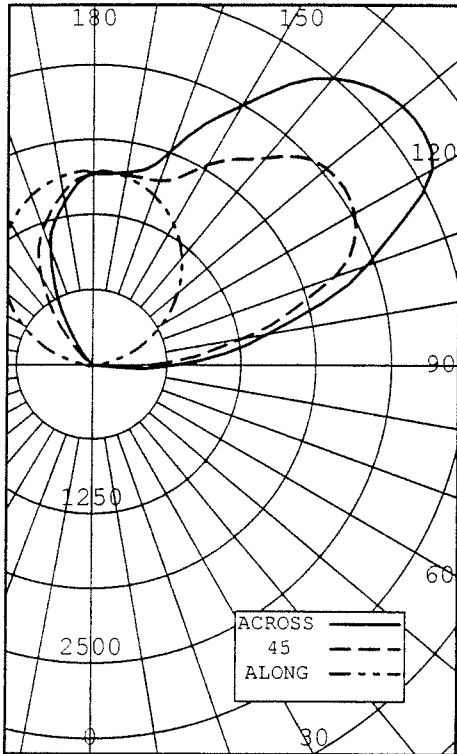


CERTIFIED TEST REPORT No.

19272

ELECTRIX - DOUBLE ADJUSTABLE ASSYMETRIC COVE LUMINAIRE, CAT# AX-D 54 UE 46
 WITH SPECULAR REFLECTORS AND NO LENS
 TWO SYLVANIA 54 WATT T5 LAMPS, CAT# FP54/841/HO. LUMEN RATING = 4500 LMS.
 ONE ADVANCE ICN-2S54 BALLAST OPERATING AT 120 VAC AND 123 WATTS

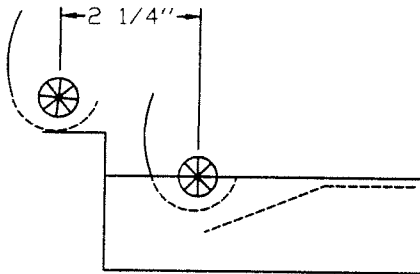


INTENSITY (CANDLEPOWER) SUMMARY OUTPUT LUMENS

ANGLE ALONG	BEAM SIDE			ACROSS		OUTPUT LUMENS
	22.5	45	67.5	67.5	ACROSS	
0	0	0	0	0	0	
5	0	0	0	0	0	0
15	0	0	0	0	0	0
25	0	0	0	0	0	0
35	0	0	0	0	0	0
45	0	0	0	0	0	0
55	0	0	0	0	0	0
65	0	0	0	0	0	0
75	0	0	5	22	27	6
85	0	20	180	356	413	109
90	4	261	496	655	709	
95	53	596	884	1068	1122	425
105	274	1229	1713	1951	1993	788
115	535	1510	2410	2807	2852	1033
125	800	1513	2565	3169	3371	1042
135	1047	1478	2451	3073	3276	883
145	1260	1428	2091	2638	2862	646
155	1430	1504	1727	2086	2217	415
165	1549	1568	1611	1659	1682	230
175	1610	1595	1596	1600	1602	78
180	1590	1590	1590	1590	1590	

ZONE	LUMENS	% LAMP	% LUMINAIRE
0-30	0	0.00	0.00
0-40	0	0.00	0.00
0-60	1	0.02	0.03
0-90	134	1.50	2.02
40-90	134	1.50	2.02
60-90	133	1.48	1.99
90-180	6559	72.88	97.98
0-180	6694	74.38	100.00

** EFFICIENCY: 74.4% **



CERTIFIED BY:

Jan Lewin

DATE:
SEP 29, 2004

PREPARED FOR:

ELECTRIX
 NEW HAVEN, CT

TESTED IN ACCORDANCE WITH IES PROCEDURES.

LIGHTING SCIENCES
7830 E. EVANS RD
SCOTTSDALE, AZ, USA 85260

CERTIFIED TEST REPORT No.

19272

ELECTRIX - DOUBLE ADJUSTABLE ASSYMETRIC COVE LUMINAIRE, CAT# AX-D 54 UE 46
WITH SPECULAR REFLECTORS AND NO LENS
TWO SYLVANIA 54 WATT T5 LAMPS, CAT# FP54/841/HO. LUMEN RATING = 4500 LMS.
ONE ADVANCE ICN-2S54 BALLAST OPERATING AT 120 VAC AND 123 WATTS

COEFFICIENTS OF UTILIZATION

ZONAL CAVITY METHOD

EFFECTIVE FLOOR CAVITY REFLECTANCE = .20

CC WALL	90				80				70				50				30				10				0	
	70	50	30	10	70	50	30	10	70	50	30	10	50	30	10	50	30	10	50	30	10	50	30	10	0	
RCR	0	0.81	0.81	0.81	0.81	0.71	0.71	0.71	0.71	0.61	0.61	0.61	0.61	0.42	0.42	0.42	0.25	0.25	0.25	0.09	0.09	0.09	0.01			
1	0.74	0.70	0.66	0.64	0.64	0.61	0.58	0.56	0.55	0.52	0.50	0.47	0.36	0.35	0.33	0.21	0.20	0.20	0.07	0.07	0.07	0.00				
2	0.67	0.61	0.55	0.51	0.58	0.53	0.49	0.45	0.50	0.45	0.42	0.39	0.31	0.29	0.27	0.18	0.17	0.16	0.06	0.06	0.05	0.00				
3	0.61	0.53	0.47	0.42	0.53	0.47	0.42	0.38	0.45	0.40	0.36	0.33	0.28	0.25	0.23	0.16	0.15	0.14	0.05	0.05	0.04	0.00				
4	0.56	0.47	0.40	0.36	0.48	0.41	0.36	0.31	0.41	0.35	0.31	0.27	0.24	0.21	0.19	0.14	0.13	0.11	0.05	0.04	0.04	0.00				
5	0.51	0.40	0.35	0.30	0.44	0.36	0.31	0.27	0.38	0.31	0.27	0.23	0.22	0.19	0.16	0.13	0.11	0.10	0.04	0.04	0.03	0.00				
6	0.47	0.37	0.30	0.26	0.41	0.32	0.27	0.23	0.35	0.28	0.23	0.20	0.19	0.16	0.14	0.11	0.10	0.08	0.04	0.03	0.03	0.00				
7	0.43	0.33	0.26	0.22	0.37	0.29	0.23	0.20	0.32	0.25	0.20	0.17	0.17	0.14	0.12	0.10	0.08	0.07	0.03	0.03	0.02	0.00				
8	0.39	0.30	0.23	0.19	0.34	0.26	0.21	0.17	0.29	0.22	0.18	0.15	0.16	0.13	0.10	0.09	0.07	0.06	0.03	0.03	0.02	0.00				
9	0.37	0.27	0.21	0.17	0.32	0.23	0.18	0.15	0.27	0.20	0.16	0.13	0.14	0.11	0.09	0.08	0.07	0.06	0.03	0.02	0.02	0.00				
10	0.34	0.24	0.18	0.15	0.30	0.21	0.16	0.13	0.25	0.18	0.14	0.11	0.13	0.10	0.08	0.08	0.06	0.05	0.03	0.02	0.02	0.00				

LUMINAIRE INPUT WATTS = 123.0

LABORATORY RESULTS MAY NOT BE REPRESENTATIVE OF FIELD PERFORMANCE.
BALLAST AND FIELD FACTORS HAVE NOT BEEN APPLIED.

TEST DISTANCE EXCEEDS FIVE TIMES THE GREATEST
LUMINOUS OPENING OF LUMINAIRE.