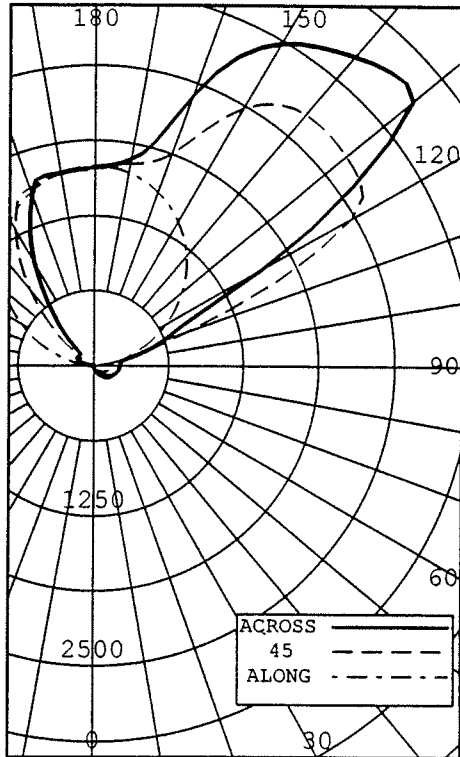




CERTIFIED TEST REPORT No.

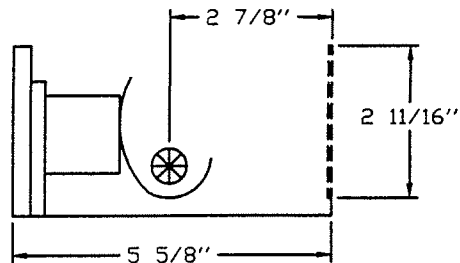
20648

ELECTRIX - INDRICT COVE LUMINAIRE - LUMILEGE, CAT# LL5-54-S1-UE-46-WH
WITH WHITE INTERIOR, SPECULAR REFLECTOR AND WHITE PLASTIC LENS
ONE PHILIPS 54 WATT T5 LAMP, CAT# F54T5/835HO. LUMEN RATING = 4500 LMS.
ONE ADVANCE ICN-2S54 BALLAST OPERATING AT 120 VAC AND 63 WATTS



INTENSITY (CANDLEPOWER) SUMMARY

ANGLE	BEAM SIDE					OUTPUT LUMENS
	ALONG	67.5	45	22.5	ACROSS	
0	0	0	0	0	0	
5	0	1	5	8	12	0
15	0	9	22	30	43	3
25	0	17	39	55	74	9
35	0	25	56	84	104	17
45	0	33	75	118	134	28
55	0	42	97	147	161	41
65	0	53	121	168	184	54
75	0	62	135	186	204	64
85	0	76	146	197	216	72
90	2	91	150	200	220	
95	66	160	157	205	226	98
105	286	1002	447	419	400	288
115	556	1583	1690	941	829	625
125	831	1847	2696	2819	2630	1000
135	1084	1872	2748	3270	3472	980
145	1301	1694	2662	3103	3249	763
155	1475	1636	2168	2684	2844	501
165	1595	1660	1756	1870	1934	255
175	1656	1667	1680	1678	1677	82
180	1656	1656	1656	1656	1656	



ZONE	LUMENS	% LAMP	% LUMINAIRE
0-30	12	0.13	0.19
0-40	29	0.33	0.46
0-60	98	1.10	1.53
0-90	289	3.22	4.50
40-90	260	2.89	4.04
60-90	190	2.12	2.96
90-180	6147	68.31	95.50
0-180	6436	71.52	100.00

** EFFICIENCY: 71.5% **

LUMINANCE SUMMARY - CD./SQ.M.

ANGLE	BEAM SIDE		
	ALONG	45	ACROSS
45	0	93	164
55	0	147	237
65	0	240	351
75	0	406	575
85	0	967	1243

CERTIFIED BY:

Jan Lewin

DATE:
NOV 16, 2005

PREPARED FOR:

ELECTRIX
NEW HAVEN, CT

LIGHTING SCIENCES
7826 E. EVANS RD.
SCOTTSDALE, AZ, USA 85260

CERTIFIED TEST REPORT No.

20648

ELECTRIX - INDRICT COVE LUMINAIRE - LUMILEGE, CAT# LL5-54-S1-UE-46-WH
WITH WHITE INTERIOR, SPECULAR REFLECTOR AND WHITE PLASTIC LENS
ONE PHILIPS 54 WATT T5 LAMP, CAT# F54T5/835HO. LUMEN RATING = 4500 LMS.
ONE ADVANCE ICN-2S54 BALLAST OPERATING AT 120 VAC AND 63 WATTS

BEAM SIDE
AVERAGE LUMINANCE DATA

ANGLE	ALONG	CD./SQ.M.		(FOOTLAMBERTS)		ACROSS
		67.5	45	22.5		
0	0(0)	0(0)	0(0)	0(0)	0(0)	0(0)
30	0(0)	22(6)	49(14)	71(20)	91(26)	
40	0(0)	34(10)	75(21)	115(33)	136(39)	
45	0(0)	42(12)	93(27)	145(42)	164(47)	
50	0(0)	52(15)	116(33)	179(52)	196(57)	
55	0(0)	65(19)	147(42)	217(63)	237(69)	
60	0(0)	84(24)	187(54)	263(76)	286(83)	
65	0(0)	110(32)	240(70)	323(94)	351(102)	
70	0(0)	147(43)	307(89)	407(118)	440(128)	
75	0(0)	202(59)	406(118)	532(155)	575(167)	
80	0(0)	309(90)	583(170)	739(215)	792(231)	
85	0(0)	616(179)	967(282)	1170(341)	1243(362)	

LIGHTING SCIENCES
7826 E. EVANS RD.
SCOTTSDALE, AZ, USA 85260

CERTIFIED TEST REPORT No.

20648

ELECTRIX - INDRICT COVE LUMINAIRE - LUMILEGE, CAT# LL5-54-S1-UE-46-WH
WITH WHITE INTERIOR, SPECULAR REFLECTOR AND WHITE PLASTIC LENS
ONE PHILIPS 54 WATT T5 LAMP, CAT# F54T5/835HO. LUMEN RATING = 4500 LMS.
ONE ADVANCE ICN-2S54 BALLAST OPERATING AT 120 VAC AND 63 WATTS

COEFFICIENTS OF UTILIZATION

ZONAL CAVITY METHOD

EFFECTIVE FLOOR CAVITY REFLECTANCE = .20

CC WALL	90				80				70				50				30				10				0
	70	50	30	10	70	50	30	10	70	50	30	10	50	30	10	50	30	10	50	30	10	0			
RCR	0	0.780	0.780	0.780	0.78	0.690	0.690	0.690	0.69	0.590	0.590	0.590	0.59	0.420	0.420	0.42	0.250	0.250	0.25	0.100	0.100	0.10	0.03		
1	0.710	0.680	0.640	0.62	0.620	0.590	0.570	0.54	0.540	0.510	0.490	0.46	0.360	0.340	0.33	0.210	0.210	0.20	0.080	0.080	0.08	0.02			
2	0.640	0.580	0.530	0.49	0.560	0.510	0.470	0.43	0.480	0.440	0.410	0.38	0.310	0.290	0.27	0.190	0.170	0.16	0.070	0.070	0.06	0.01			
3	0.590	0.510	0.450	0.41	0.510	0.450	0.400	0.36	0.440	0.390	0.350	0.32	0.270	0.250	0.22	0.160	0.150	0.14	0.060	0.060	0.05	0.01			
4	0.540	0.450	0.390	0.34	0.470	0.400	0.340	0.30	0.400	0.340	0.300	0.26	0.240	0.210	0.19	0.140	0.130	0.11	0.050	0.050	0.04	0.01			
5	0.490	0.380	0.330	0.29	0.430	0.340	0.290	0.26	0.370	0.300	0.260	0.22	0.210	0.180	0.16	0.130	0.110	0.10	0.050	0.040	0.04	0.01			
6	0.450	0.350	0.290	0.24	0.390	0.310	0.260	0.22	0.330	0.270	0.220	0.19	0.190	0.160	0.14	0.110	0.100	0.08	0.040	0.040	0.03	0.00			
7	0.410	0.320	0.250	0.21	0.360	0.280	0.220	0.19	0.310	0.240	0.190	0.16	0.170	0.140	0.12	0.100	0.080	0.07	0.040	0.030	0.03	0.00			
8	0.380	0.280	0.220	0.18	0.330	0.250	0.200	0.16	0.280	0.220	0.170	0.14	0.150	0.120	0.10	0.090	0.070	0.06	0.030	0.030	0.02	0.00			
9	0.350	0.250	0.200	0.16	0.310	0.220	0.170	0.14	0.260	0.190	0.150	0.12	0.140	0.110	0.09	0.080	0.070	0.05	0.030	0.020	0.02	0.00			
10	0.330	0.230	0.180	0.14	0.280	0.200	0.160	0.12	0.240	0.180	0.140	0.11	0.120	0.100	0.08	0.080	0.060	0.05	0.030	0.020	0.02	0.00			

LUMINAIRE INPUT WATTS = 63.0

LABORATORY RESULTS MAY NOT BE REPRESENTATIVE OF FIELD PERFORMANCE.
BALLAST AND FIELD FACTORS HAVE NOT BEEN APPLIED.

TEST DISTANCE EXCEEDS FIVE TIMES THE GREATEST
LUMINOUS OPENING OF LUMINAIRE.

LIGHTING SCIENCES, INC.
 7826 E. EVANS RD.
 SCOTTSDALE, AZ, USA 85260

CERTIFIED TEST REPORT No. 25236

ELECTRIX INC - INDIRECT COVE LUMINAIRE, CAT# MX40FM1E24
 WITH WHITE REFLECTOR AND NO LENS
 ONE OSRAM 40W BIAx LAMP, CAT# DULUX L 40W/4100K. LUMEN RATING = 3150 LMS.
 ONE ADVANCE ICN-2S39 BALLAST OPERATING AT 120 VAC AND 49 WATTS

COEFFICIENTS OF UTILIZATION

ZONAL CAVITY METHOD

EFFECTIVE FLOOR CAVITY REFLECTANCE = .20

CC WALL	90				80				70				50				30				10				0	
	70	50	30	10	70	50	30	10	70	50	30	10	50	30	10	50	30	10	50	30	10	50	30	10	0	
RCR	0	0.990	.990	.990	.99	0.880	.880	.880	.88	0.780	.780	.780	.78	0.590	.590	.59	0.420	.420	.42	0.260	.260	.26	0.19			
	1	0.880	.820	.770	.74	0.780	.730	.690	.65	0.690	.650	.610	.57	0.480	.460	.43	0.330	.310	.30	0.190	.180	.17	0.11			
	2	0.780	.700	.630	.57	0.700	.620	.560	.51	0.610	.550	.490	.45	0.400	.370	.33	0.270	.250	.23	0.150	.140	.12	0.07			
	3	0.710	.600	.520	.46	0.630	.540	.470	.41	0.550	.470	.410	.36	0.350	.300	.27	0.230	.200	.18	0.120	.110	.09	0.04			
	4	0.650	.530	.440	.38	0.570	.470	.400	.34	0.500	.410	.350	.30	0.300	.260	.22	0.200	.170	.15	0.110	.090	.07	0.03			
	5	0.590	.450	.380	.32	0.520	.410	.340	.28	0.450	.360	.300	.25	0.270	.220	.18	0.180	.140	.12	0.090	.070	.06	0.02			
	6	0.540	.410	.330	.27	0.480	.370	.290	.24	0.420	.320	.260	.21	0.240	.190	.16	0.160	.130	.10	0.080	.060	.05	0.02			
	7	0.490	.370	.280	.23	0.440	.330	.250	.20	0.380	.290	.220	.18	0.210	.160	.13	0.140	.110	.08	0.070	.050	.04	0.01			
	8	0.450	.330	.250	.20	0.400	.290	.220	.18	0.350	.260	.200	.16	0.190	.150	.11	0.130	.100	.07	0.070	.050	.03	0.01			
	9	0.420	.300	.220	.17	0.370	.270	.200	.15	0.330	.230	.180	.14	0.170	.130	.10	0.120	.090	.06	0.060	.040	.03	0.01			
	10	0.390	.270	.200	.15	0.350	.240	.180	.14	0.300	.210	.160	.12	0.160	.120	.09	0.110	.080	.06	0.060	.040	.03	0.01			

LUMINAIRE INPUT WATTS 49.0

LABORATORY RESULTS MAY NOT BE REPRESENTATIVE OF FIELD PERFORMANCE.
 BALLAST AND FIELD FACTORS HAVE NOT BEEN APPLIED.

TEST DISTANCE EXCEEDS FIVE TIMES THE GREATEST
 LUMINOUS OPENING OF LUMINAIRE.