

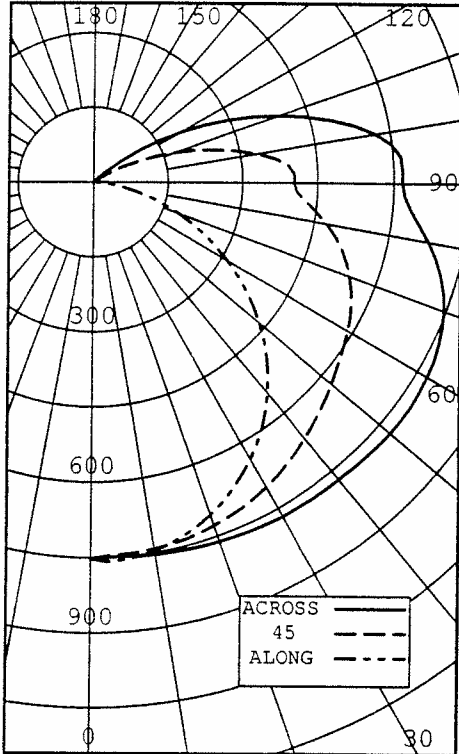
CERTIFIED TEST REPORT No.

19400

ELECTRIX - STRIP LUMINAIRE, CAT# TX 54 LM UE 46
 WITH WHITE INTERIOR AND NO LENS
 ONE SYLVANIA 54 WATT T5 LAMP, CAT# FP54/841/HO. LUMEN RATING = 4500 LMS.
 ONE ADVANCE ICN-2S54 BALAST OPERATING AT 120 VAC AND 63 WATTS

CANDLEPOWER SUMMARY

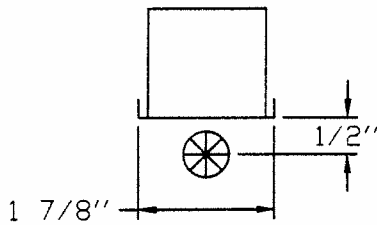
OUTPUT
LUMENS



ANGLE	ALONG	22.5	45	67.5	ACROSS	
0	751	751	751	751	751	
5	756	748	745	749	749	72
15	729	727	737	752	758	209
25	675	685	717	752	766	331
35	596	622	684	746	771	428
45	494	543	646	739	775	495
55	376	457	607	732	778	531
65	248	376	571	713	763	536
75	119	305	517	667	720	502
85	19	214	427	582	637	427
90	0	177	402	561	617	
95	0	150	392	558	615	376
105	0	39	253	425	488	255
115	0	0	100	242	296	123
125	0	0	1	70	110	31
135	0	0	0	0	0	1
145	0	0	0	0	0	0
155	0	0	0	0	0	0
165	0	0	0	0	0	0
175	0	0	0	0	0	0
180	0	0	0	0	0	0

ZONE	LUMENS	% LAMP	% LUMINAIRE
0-30	612	13.62	14.20
0-40	1041	23.14	24.12
0-60	2067	45.94	47.89
0-90	3531	78.48	81.81
40-90	2490	55.34	57.69
60-90	1464	32.54	33.92
90-180	785	17.45	18.19
0-180	4316	95.93	100.00

** EFFICIENCY: 95.9% **



LUMINANCE SUMMARY - CD./SQ.M.

ANGLE	ALONG	45	ACROSS
45	12521	16436	18985
55	11756	18302	20473
65	10519	19727	21602
75	8250	20926	23429
85	3858	22491	24526

PAINT REFLECTANCE: .77 , S/MH: 1.6
 SC(ALONG): 1.3, SC(ACROSS): 1.6

CERTIFIED BY:

Jan Levin

DATE:
OCT 27, 2004

PREPARED FOR:

ELECTRIX INC.
 NEW HAVEN, CT

TESTED IN ACCORDANCE WITH IES PROCEDURES.

LIGHTING SCIENCES
7826 E. EVANS RD.
SCOTTSDALE, AZ, USA 85260

CERTIFIED TEST REPORT No.

19400

ELECTRIX - STRIP LUMINAIRE, CAT# TX 54 LM UE 46
WITH WHITE INTERIOR AND NO LENS
ONE SYLVANIA 54 WATT T5 LAMP, CAT# FP54/841/HO. LUMEN RATING = 4500 LMS.
ONE ADVANCE ICN-2S54 BALAST OPERATING AT 120 VAC AND 63 WATTS

CANDLEPOWER DATA

ANGLE	PLANE						OUTPUT LUMENS
	ALONG	22.5	45	67.5	ACROSS	AVERAGE	
0	751	751	751	751	751	751	
5	756	748	745	749	749	749	72
10	746	740	742	751	754	746	
15	729	727	737	752	758	740	209
20	705	708	728	752	762	731	
25	675	685	717	752	766	718	331
30	639	656	702	750	769	703	
35	596	622	684	746	771	684	428
40	547	584	666	743	772	663	
45	494	543	646	739	775	641	495
50	437	501	626	736	778	618	
55	376	457	607	732	778	593	531
60	313	415	590	724	772	568	
65	248	376	571	713	763	541	536
70	182	339	547	694	746	511	
75	119	305	517	667	720	477	502
80	62	264	476	628	681	435	
85	19	214	427	582	637	388	427
90	0	177	402	561	617	362	
95	0	150	392	558	615	352	376
100	0	92	331	508	570	304	
105	0	39	253	425	488	240	255
110	0	3	174	333	393	177	
115	0	0	100	242	296	122	123
120	0	0	34	152	200	72	
125	0	0	1	70	110	31	31
130	0	0	0	10	32	6	
135	0	0	0	0	0	0	1
140	0	0	0	0	0	0	
145	0	0	0	0	0	0	0
150	0	0	0	0	0	0	
155	0	0	0	0	0	0	0
160	0	0	0	0	0	0	
165	0	0	0	0	0	0	0
170	0	0	0	0	0	0	
175	0	0	0	0	0	0	0
180	0	0	0	0	0	0	

LIGHTING SCIENCES
7826 E. EVANS RD.
SCOTTSDALE, AZ, USA 85260

CERTIFIED TEST REPORT No.

19400

ELECTRIX - STRIP LUMINAIRE, CAT# TX 54 LM UE 46
WITH WHITE INTERIOR AND NO LENS
ONE SYLVANIA 54 WATT T5 LAMP, CAT# FP54/841/HO. LUMEN RATING = 4500 LMS.
ONE ADVANCE ICN-2S54 BALAST OPERATING AT 120 VAC AND 63 WATTS

AVERAGE LUMINANCE DATA

ANGLE	CD./SQ.M.		(FOOTLAMBERTS)			
	ALONG	22.5	45	67.5	ACROSS	
0	13460 (3928)	13460 (3928)	13460 (3928)	13460 (3928)	13460 (3928)	
30	13214 (3856)	13877 (4050)	14670 (4281)	15575 (4545)	15892 (4638)	
40	12799 (3735)	13870 (4048)	15575 (4546)	17422 (5085)	18075 (5275)	
45	12521 (3654)	13908 (4059)	16436 (4797)	18416 (5374)	18985 (5541)	
50	12178 (3554)	14081 (4109)	17443 (5091)	19378 (5655)	20004 (5838)	
55	11756 (3431)	14314 (4177)	18302 (5341)	20095 (5865)	20473 (5975)	
60	11219 (3274)	14918 (4354)	19267 (5623)	20488 (5979)	20818 (6076)	
65	10519 (3070)	15943 (4653)	19727 (5757)	21135 (6168)	21602 (6305)	
70	9553 (2788)	16976 (4954)	20264 (5914)	21843 (6375)	22256 (6495)	
75	8250 (2407)	17779 (5189)	20926 (6107)	22877 (6677)	23429 (6838)	
80	6425 (1875)	18050 (5268)	22003 (6422)	23904 (6976)	24395 (7120)	
85	3858 (1126)	18503 (5400)	22491 (6564)	24104 (7035)	24526 (7158)	

