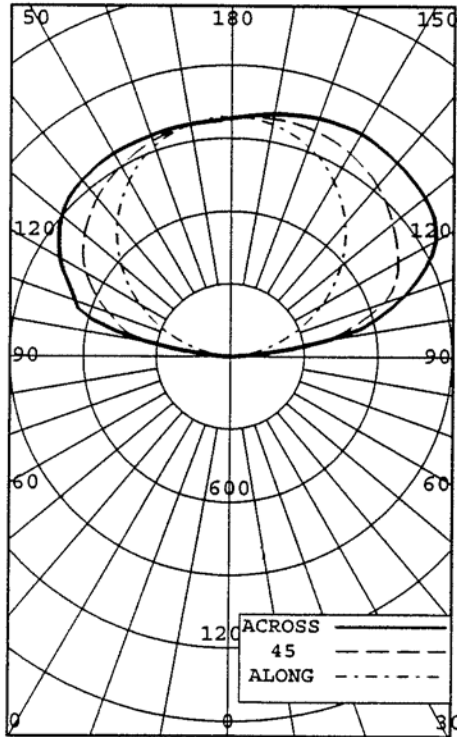




ELECTRIX INC. - FLUORESCENT COVE LUMINAIRE - LUMILEGE, CAT# LLSR7-GTB-54
WITH WHITE INTERIOR AND NO LENS
ONE PHILIPS 54 WATT T5 LAMP, CAT# FP54T5/841/HO. LUMEN RATING = 4500 LMS.
ONE ADVANCE ICN-2S54 BALLAST OPERATING AT 120 VAC AND 64 WATTS

INTENSITY (CANDLEPOWER) SUMMARY

ANGLE	BEAM SIDE					OUTPUT LUMENS
	ALONG	67.5	45	22.5	ACROSS	
180	983	983	983	983	983	
175	986	979	990	993	998	48
170	973	974	996	1007	1017	
165	951	962	996	1018	1031	140
160	921	944	992	1025	1045	
155	883	918	983	1030	1055	225
150	836	886	969	1030	1061	
145	782	848	948	1025	1055	293
140	723	804	926	1010	1048	
135	655	756	894	996	1039	337
130	583	703	858	979	1027	
125	507	648	823	958	1007	356
120	425	588	785	922	959	
115	341	523	741	853	872	335
110	256	463	665	740	754	
105	173	404	533	609	616	254
100	97	304	397	439	398	
95	37	167	167	143	99	81
90	0	0	0	0	0	

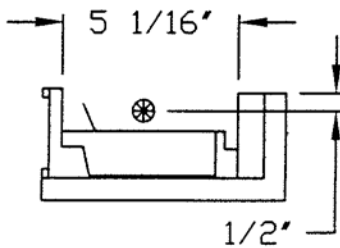


BOTH SIDES

ZONAL LUMENS AND PERCENTAGES

ZONE	LUMENS	% LAMP	% LUMINAIRE
180-150	808	17.97	20.55
180-140	1375	30.56	34.94
180-120	2695	59.90	68.48
180-90	3936	87.47	100.00
140-90	2561	56.91	65.06
120-90	1240	27.57	31.52
0-90	0	0.00	0.00
0-180	3936	87.47	100.00

** EFFICIENCY: 87.5% **



CERTIFIED BY:

Tan Lewin

DATE:

JUN 21, 2006

PREPARED FOR:

ELECTRIX INC.
NEW HAVEN, CT

TESTED IN ACCORDANCE WITH IES PROCEDURES.

LIGHTING SCIENCES
7826 E. EVANS RD.
SCOTTSDALE, AZ, USA 85260

CERTIFIED TEST REPORT No.

21311

ELECTRIX INC. - FLUORESCENT COVE LUMINAIRE - LUMILEGE, CAT# LLSR7-GTB-54
WITH WHITE INTERIOR AND NO LENS
ONE PHILIPS 54 WATT T5 LAMP, CAT# FP54T5/841/HO. LUMEN RATING = 4500 LMS.
ONE ADVANCE ICN-2S54 BALLAST OPERATING AT 120 VAC AND 64 WATTS

BEAM SIDE
INTENSITY (CANDLEPOWER) DATA
IN 2.5 DEGREE STEPS

ANGLE	PLANE					AVERAGE	OUTPUT LUMENS
	ALONG	67.5	45	22.5	ACROSS		
180.0	983	983	983	983	983	983	
177.5	989	980	987	986	990	985	
175.0	986	979	990	993	998	988	48
172.5	980	977	994	1000	1008	991	
170.0	973	974	996	1007	1017	993	
167.5	963	969	997	1013	1025	993	
165.0	951	962	996	1018	1031	992	140
162.5	937	954	995	1022	1038	989	
160.0	921	944	992	1025	1045	986	
157.5	903	932	988	1028	1050	981	
155.0	883	918	983	1030	1055	975	225
152.5	860	904	977	1032	1058	968	
150.0	836	886	969	1030	1061	958	
147.5	810	867	960	1029	1060	948	
145.0	782	848	948	1025	1055	935	293
142.5	753	827	939	1017	1052	921	
140.0	723	804	926	1010	1048	906	
137.5	690	781	911	1003	1044	891	
135.0	655	756	894	996	1039	873	337
132.5	620	730	876	988	1033	855	
130.0	583	703	858	979	1027	836	
127.5	546	676	841	969	1018	817	
125.0	507	648	823	958	1007	796	356
122.5	466	618	804	943	986	773	
120.0	425	588	785	922	959	747	
117.5	384	554	765	893	921	716	
115.0	341	523	741	853	872	681	335
112.5	299	493	708	801	815	640	
110.0	256	463	665	740	754	593	
107.5	214	434	603	678	688	541	
105.0	173	404	533	609	616	485	254
102.5	133	365	467	538	542	427	
100.0	97	304	397	439	398	347	
97.5	64	230	304	291	245	245	
95.0	37	167	167	143	99	136	81
92.5	16	77	48	30	12	42	
90.0	0	0	0	0	0	0	

LIGHTING SCIENCES
7826 E. EVANS RD.
SCOTTSDALE, AZ, USA 85260

CERTIFIED TEST REPORT No.

21311

ELECTRIX INC. - FLUORESCENT COVE LUMINAIRE - LUMILEGE, CAT# LLSR7-GTB-54
WITH WHITE INTERIOR AND NO LENS
ONE PHILIPS 54 WATT T5 LAMP, CAT# FP54T5/841/HO. LUMEN RATING = 4500 LMS.
ONE ADVANCE ICN-2S54 BALLAST OPERATING AT 120 VAC AND 64 WATTS

OPPOSITE SIDE TO BEAM
INTENSITY (CANDLEPOWER) DATA
IN 2.5 DEGREE STEPS

ANGLE	PLANE					AVERAGE	OUTPUT LUMENS
	ALONG	112.5	135	157.5	ACROSS		
180.0	983	983	983	983	983	983	
177.5	989	977	982	978	978	980	
175.0	986	974	979	976	976	978	47
172.5	980	969	976	975	976	975	
170.0	973	962	971	973	974	970	
167.5	963	954	966	971	973	965	
165.0	951	944	960	969	973	959	135
162.5	937	932	953	966	971	951	
160.0	921	919	945	963	969	943	
157.5	903	904	936	960	968	934	
155.0	883	888	927	957	968	924	213
152.5	860	870	916	954	968	913	
150.0	836	850	905	951	966	902	
147.5	810	830	893	946	963	889	
145.0	782	808	881	940	960	875	274
142.5	753	785	867	932	953	859	
140.0	723	760	853	922	949	843	
137.5	690	735	837	914	942	825	
135.0	655	708	819	902	933	806	311
132.5	620	681	801	888	920	785	
130.0	583	653	782	871	904	762	
127.5	546	625	762	850	884	738	
125.0	507	596	739	826	860	711	317
122.5	466	567	713	797	833	682	
120.0	425	536	682	767	806	650	
117.5	384	505	648	735	774	617	
115.0	341	473	612	698	736	581	287
112.5	299	440	574	661	702	544	
110.0	256	404	534	632	678	509	
107.5	214	364	495	607	655	475	
105.0	173	320	463	550	587	428	219
102.5	133	278	423	450	479	364	
100.0	97	241	341	326	351	283	
97.5	64	204	229	202	223	195	
95.0	37	142	115	87	103	104	65
92.5	16	63	36	24	30	37	
90.0	0	0	0	0	0	0	

LIGHTING SCIENCES
7826 E. EVANS RD.
SCOTTSDALE, AZ, USA 85260

CERTIFIED TEST REPORT No. 21311

ELECTRIX INC. - FLUORESCENT COVE LUMINAIRE - LUMILEGE, CAT# LLSR7-GTB-54
WITH WHITE INTERIOR AND NO LENS
ONE PHILIPS 54 WATT T5 LAMP, CAT# FP54T5/841/HO. LUMEN RATING = 4500 LMS.
ONE ADVANCE ICN-2S54 BALLAST OPERATING AT 120 VAC AND 64 WATTS

COEFFICIENTS OF UTILIZATION

ZONAL CAVITY METHOD

EFFECTIVE FLOOR CAVITY REFLECTANCE = .20

CC	90				80				70				50				30				10				0	
WALL	70	50	30	10	70	50	30	10	70	50	30	10	50	30	10	50	30	10	50	30	10	50	30	10	0	
RCR																										
0	0.950	0.950	0.950	0.95	0.830	0.830	0.830	0.83	0.710	0.710	0.710	0.71	0.490	0.490	0.49	0.280	0.280	0.28	0.090	0.090	0.09	0.00				
1	0.870	0.830	0.790	0.76	0.760	0.720	0.690	0.66	0.650	0.620	0.590	0.56	0.420	0.410	0.39	0.240	0.240	0.23	0.080	0.080	0.07	0.00				
2	0.790	0.720	0.660	0.61	0.690	0.630	0.580	0.54	0.590	0.540	0.500	0.46	0.370	0.340	0.32	0.210	0.200	0.19	0.070	0.060	0.06	0.00				
3	0.720	0.630	0.560	0.51	0.630	0.550	0.500	0.45	0.530	0.470	0.430	0.39	0.330	0.300	0.27	0.190	0.170	0.16	0.060	0.060	0.05	0.00				
4	0.660	0.550	0.480	0.43	0.570	0.490	0.420	0.38	0.490	0.420	0.370	0.33	0.290	0.250	0.23	0.170	0.150	0.14	0.050	0.050	0.04	0.00				
5	0.600	0.470	0.410	0.36	0.520	0.420	0.370	0.32	0.450	0.370	0.320	0.28	0.250	0.220	0.20	0.150	0.130	0.12	0.050	0.040	0.04	0.00				
6	0.550	0.440	0.360	0.31	0.480	0.380	0.320	0.27	0.410	0.330	0.280	0.24	0.230	0.190	0.17	0.130	0.110	0.10	0.040	0.040	0.03	0.00				
7	0.510	0.390	0.310	0.26	0.440	0.340	0.280	0.23	0.370	0.290	0.240	0.20	0.200	0.170	0.14	0.120	0.100	0.09	0.040	0.030	0.03	0.00				
8	0.470	0.350	0.280	0.23	0.410	0.310	0.240	0.20	0.350	0.260	0.210	0.18	0.180	0.150	0.13	0.110	0.090	0.07	0.030	0.030	0.02	0.00				
9	0.430	0.320	0.240	0.20	0.380	0.280	0.220	0.18	0.320	0.240	0.190	0.15	0.170	0.130	0.11	0.100	0.080	0.07	0.030	0.030	0.02	0.00				
10	0.400	0.290	0.220	0.18	0.350	0.250	0.190	0.16	0.300	0.220	0.170	0.14	0.150	0.120	0.10	0.090	0.070	0.06	0.030	0.020	0.02	0.00				

LUMINAIRE INPUT WATTS = 64.0

LABORATORY RESULTS MAY NOT BE REPRESENTATIVE OF FIELD PERFORMANCE.
BALLAST AND FIELD FACTORS HAVE NOT BEEN APPLIED.

TEST DISTANCE EXCEEDS FIVE TIMES THE GREATEST
LUMINOUS OPENING OF LUMINAIRE.